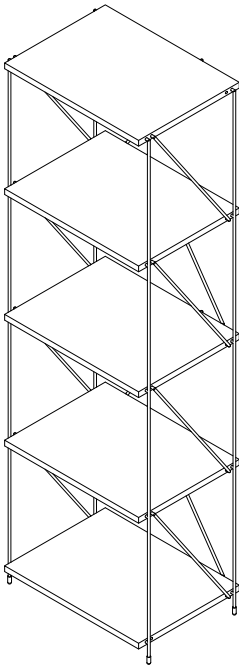
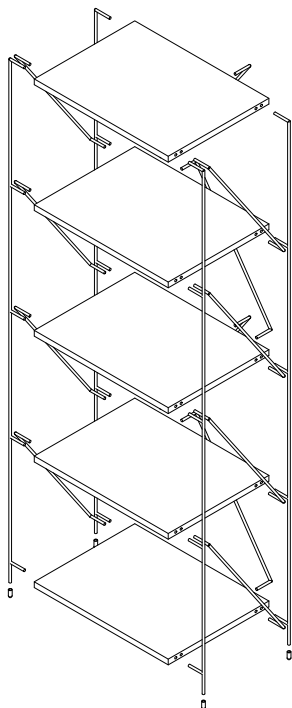
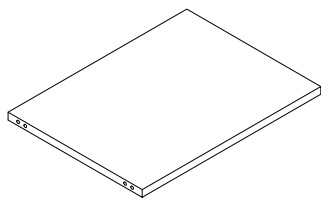


ASSEMBLY INSTRUCTIONS

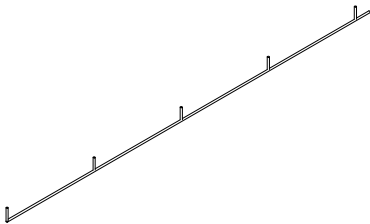
MODEL:5 TIER EZBO RACK 400



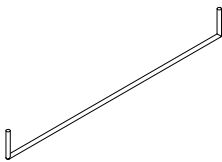
COMPLETED ASSEMBLY



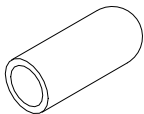
① 5 PCS



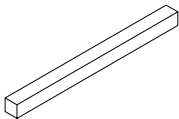
② 4 PCS



③ 12 PCS



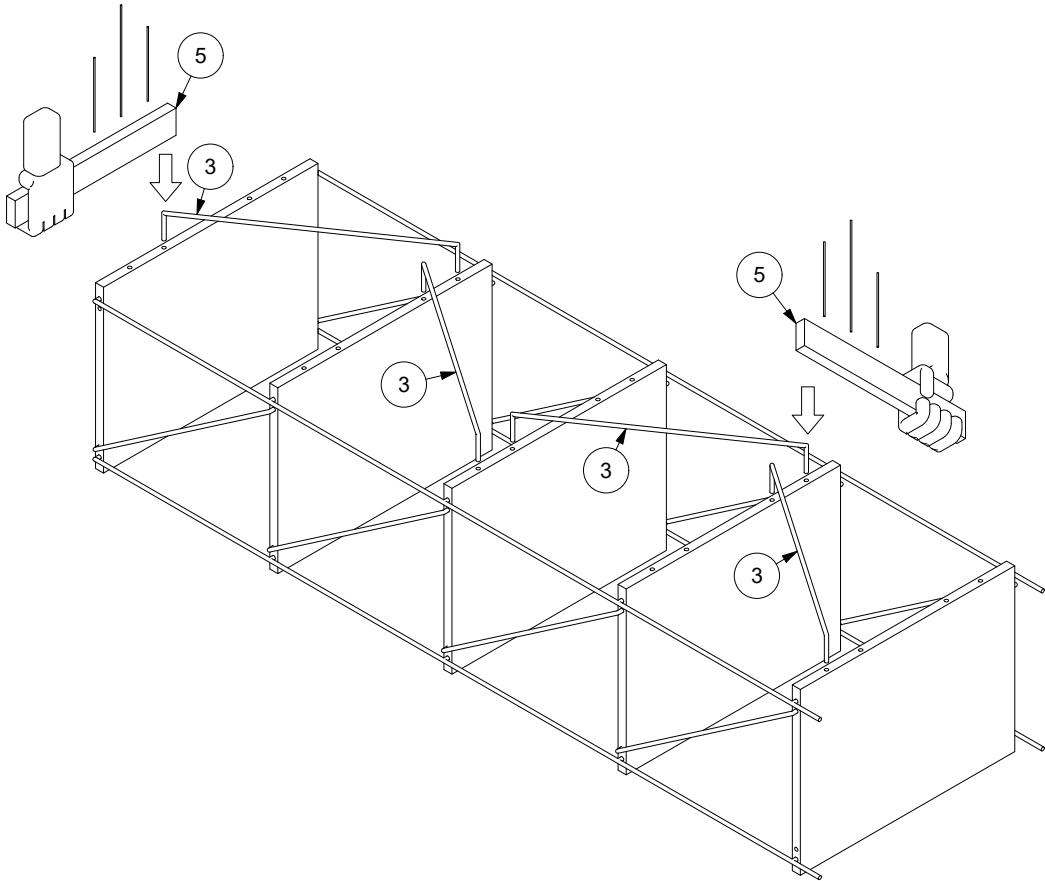
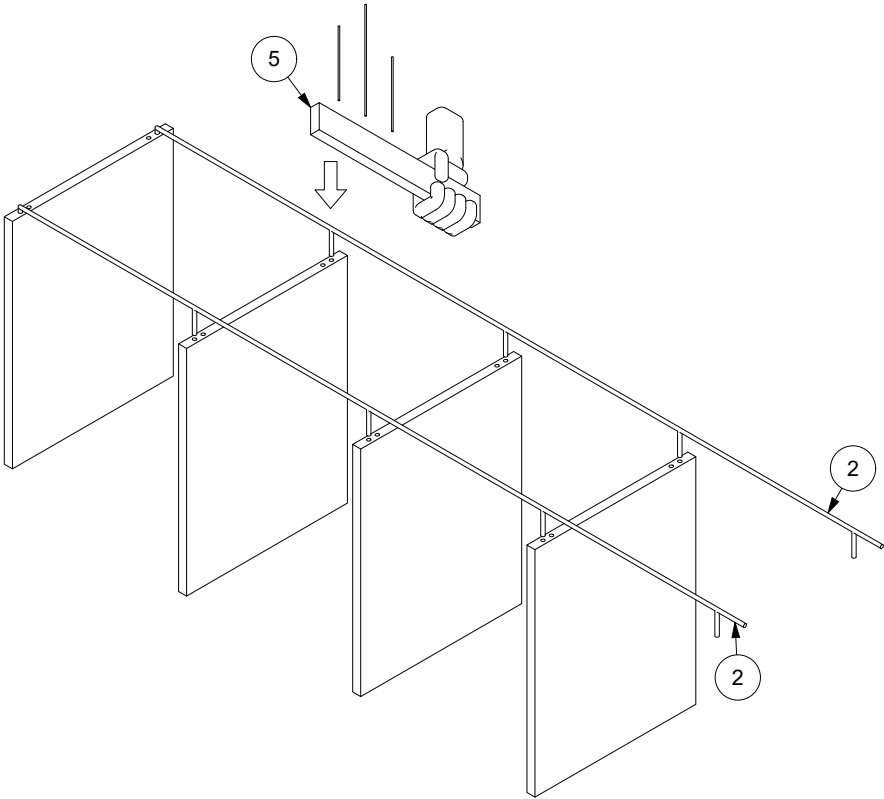
④ 4 PCS



⑤ 1 PCS

ASSEMBLY INSTRUCTIONS

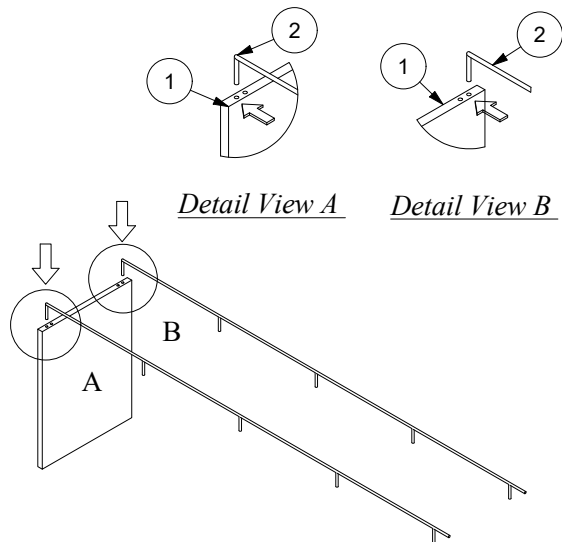
MODEL:5 TIER EZBO RACK 400



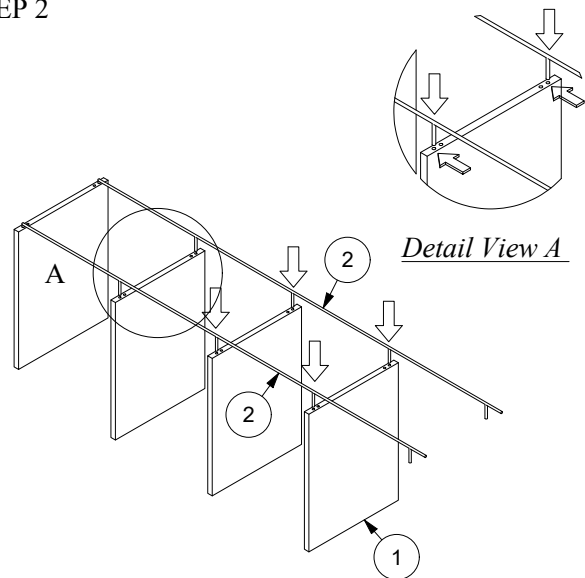
ASSEMBLY INSTRUCTIONS

MODEL:5 TIER EZBO RACK 400

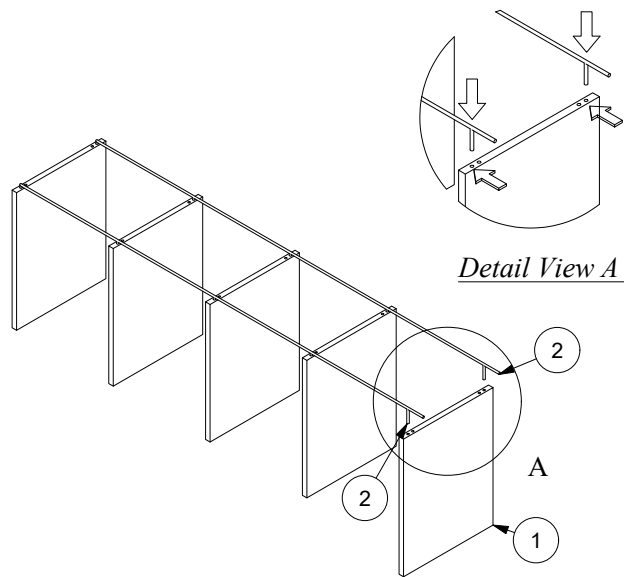
STEP 1



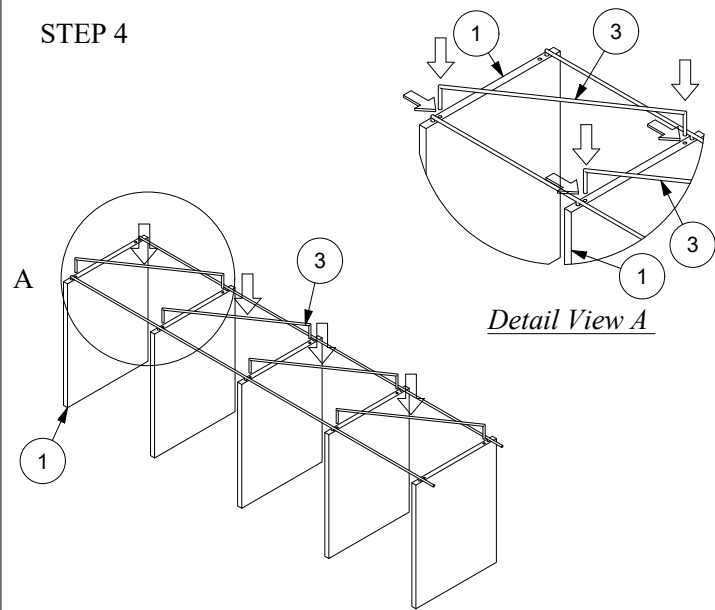
STEP 2



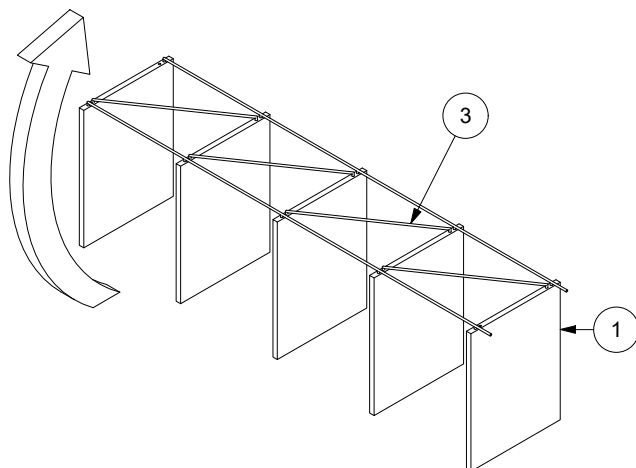
STEP 3



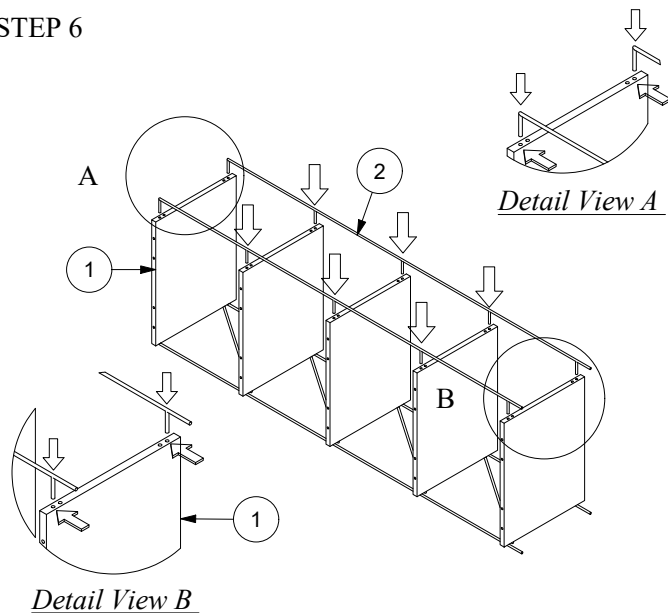
STEP 4



STEP 5



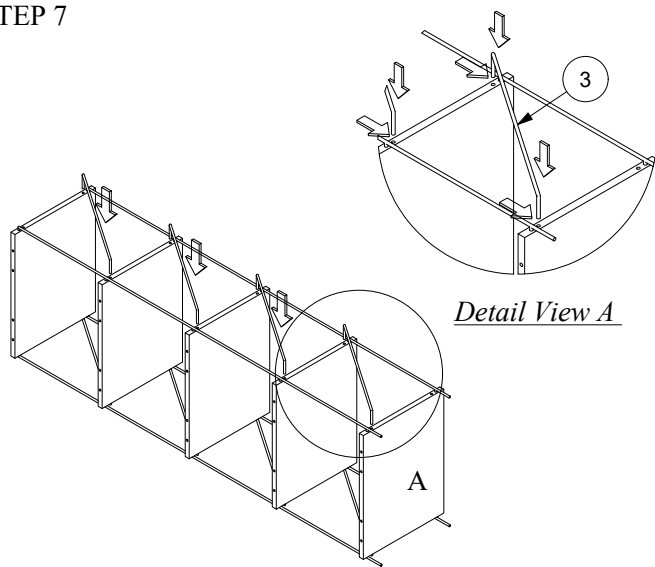
STEP 6



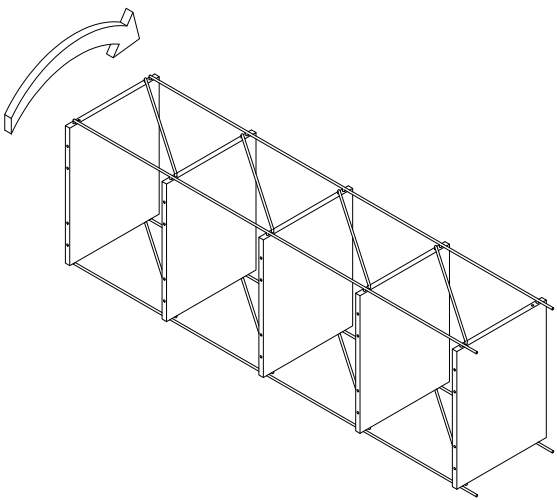
ASSEMBLY INSTRUCTIONS

MODEL:5 TIER EZBO RACK 400

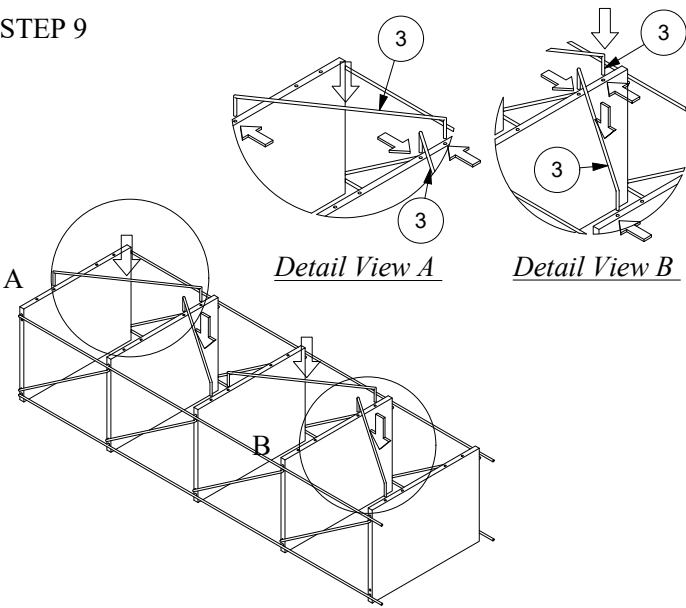
STEP 7



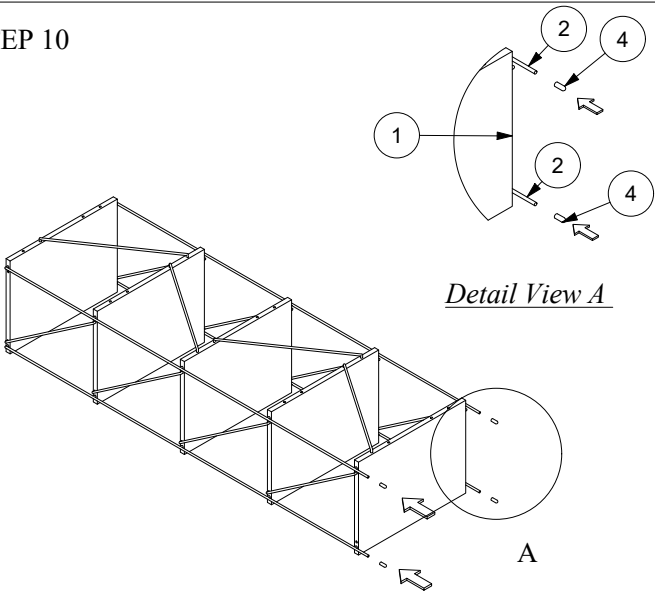
STEP 8



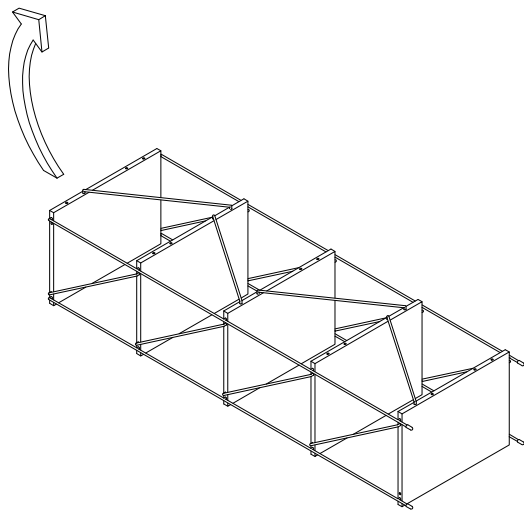
STEP 9



STEP 10



STEP 11



STEP 12

